



Victaulic Groove Hose Shank Coupling

Part One: Introduction:

Large dimension hose couplings and fittings are very popular in American market in the past few years. Mainly is due to the blooming of shale oil business. These large dimension couplings not only used in Oil field, but is multi-purpose used. Such as in water fracturing process, agriculture, firefighting, emergency repairs & water supplies, temporary installations and Bypasses

One of these LDHC couplings, there is one type need through the Victaulic clamp finish the whole connection, that is Victaulic groove end hose shank couplings. This kind of forged Aluminum hose shank couplings, through the Victaulic clamp offering a quick and economical way to use lay-flat hose in the transfer of fluid.

Part Two: Victaulic type hose shank coupling Spec:

1. Body material: 6061-T6 Aluminum,
2. Bolts and Nuts: Galvanized steel 12.9 grade
3. Manufacture method: Mold Forged
4. Surface Treatment: Hard Anodized coated
5. Bolts and nuts number: 6" 8" and 10": 12pc, 12" 16pc
6. Rated pressure: high strength forged heads and forged aluminum locks to exceed lock shear test of 300lbs
6" WP: 200PSI, BP: 600PSI
8" WP:215PSI, BP:645PSI
10" WP:200PSI, BP:600PSI
12" WP:150PSI, BP:450PSI
7. Temperature: -50°C to 80°C
8. Scope of hose wall thickness: 3.5-6mm
9. Connect method: with standard Victaulic clamp
10. Size available: 6", 8", 10", 12"
11. Segment Bolt Clamp pieces: 6"-10":3pc, 12": 4pc
12. OD of LDHC shank nipple: 6" 153.5mm, 8" 203.5mm, 10" 254mm, 12" 304mm

13. Unite Weight: 6" 10kg, 8" 18kg, 10" 25kg, 12" 32kg

Note: If the actual hose ID is smaller than the normal hose size, hose expander is recommended to assistant assembling the hose

Part Three: Victaulic type hose shank coupling Features:

- a. Full Bore design to minimize friction loss and increase flow
- b. Sexless design to facilitate assembly and connection
- c. Can be used with PVC/Nitrile or PU lay-flat hose
- d. Light-weight aluminum design
- e. Hard-coat anodized for abrasion resistance, anodized to Type II and Type III standards
- f. Simple, low maintenance clamping mechanism
- g. Rugged drag coupling is designed for use on rough terrain Field-proven results for over 15 years in the agricultural industry
- h. Truly re-attachable fitting allows for easy fix in the field

Part Four: Victaulic Groove hose shank coupling Applications:

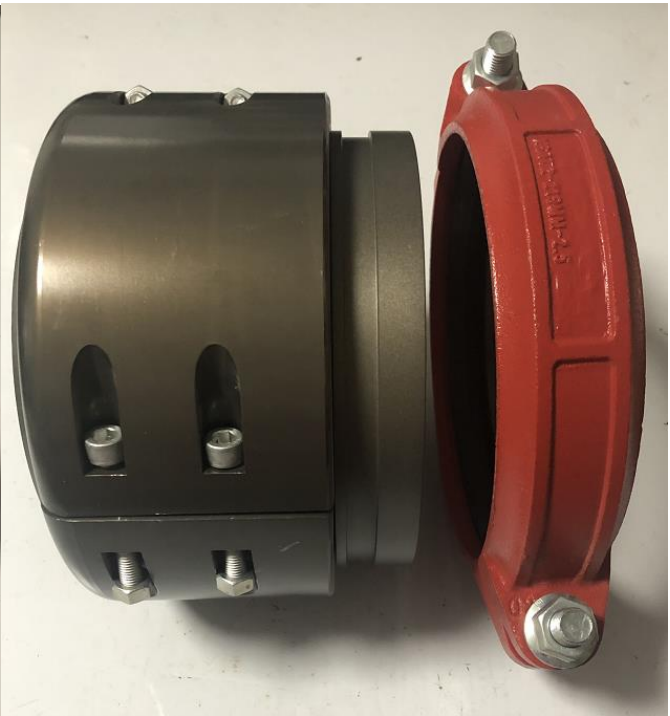
- Oil industry applications: Onshore/ offshore oil or gas exploration
- Dewatering & drainage: Suction and delivery lines for site dewatering
- Bypass for water & sewer lines, Dredging
- Water transfer (fresh & waste water)
- Mining & tunneling
- Civil engineering projects,
- Emergency water supply, such as flood disaster and fire control
- Sludge handling
- Road construction
- Irrigation systems
- Well point & Pumps & pumping stations

Part Five: Photos in details









Optical another type LDCH-Storz Coupling:

